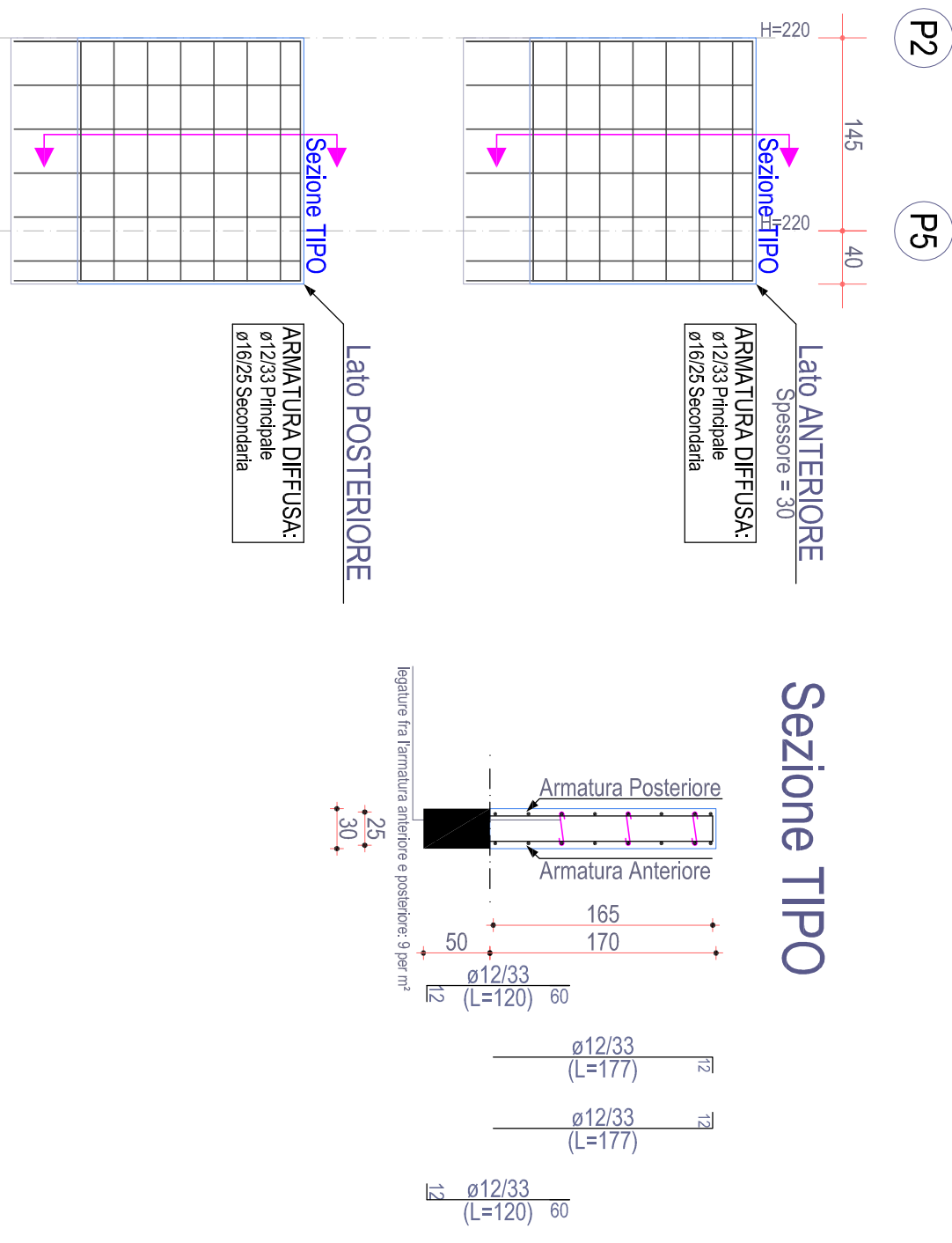


Il progettista Arch. Roberto Galati Via S. Maria della Pace, 156 71121 Foggia - telefono 0884/520000 fax 0884/520001 www.ingegnergalati.it	Il responsabile tecnico del procedimento e il tecnico incaricato per la redazione del progetto (Ing. Ubaldo Carlucci (A.R.C.A. Capitanata)) Ing. Francesco Sisti Il datore dell'area e l'interlocutore Ing. Vincenzo DE DIVITTIS
--	---

PARTE ESECUTIVI STRUTTURE BLOCCO 7° STATO DI PROGETTO PARETI PIANO NERVATURE	SCALA 1:50 LAVA
ACCOMPAGNAMENTI L. IMPRESA	L. DIRETTORE DELL'OPERA
PR	

PARETE P2-P5

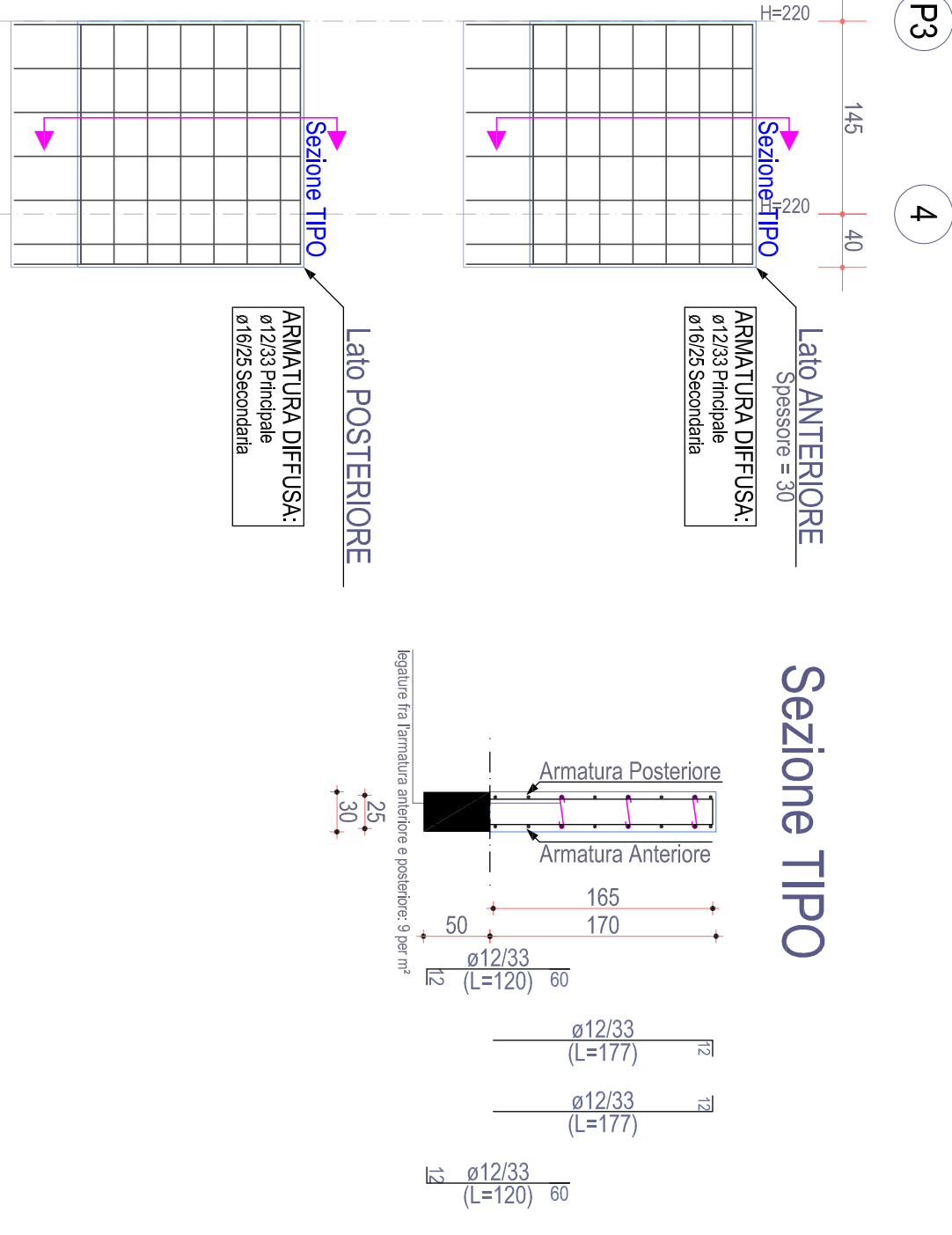
Piano Nervatura



Scala: 1/50

PARETE P3-4

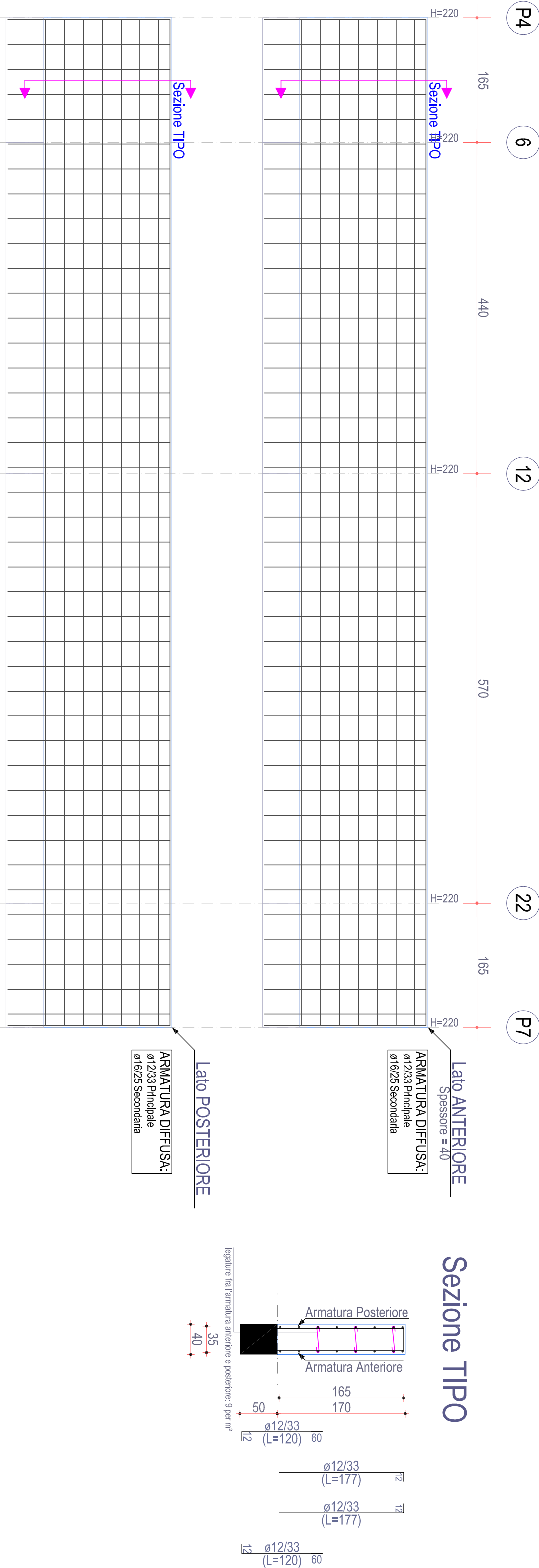
Piano Nervatura



Scala: 1/50

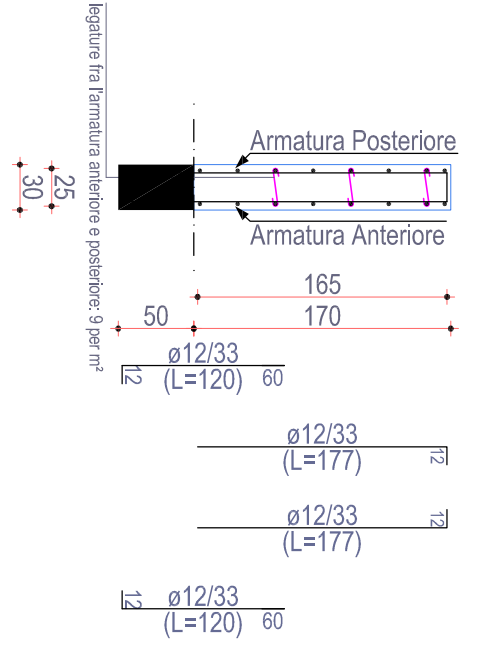
PARETE P4-6-12-22-P7

Piano Nervatura



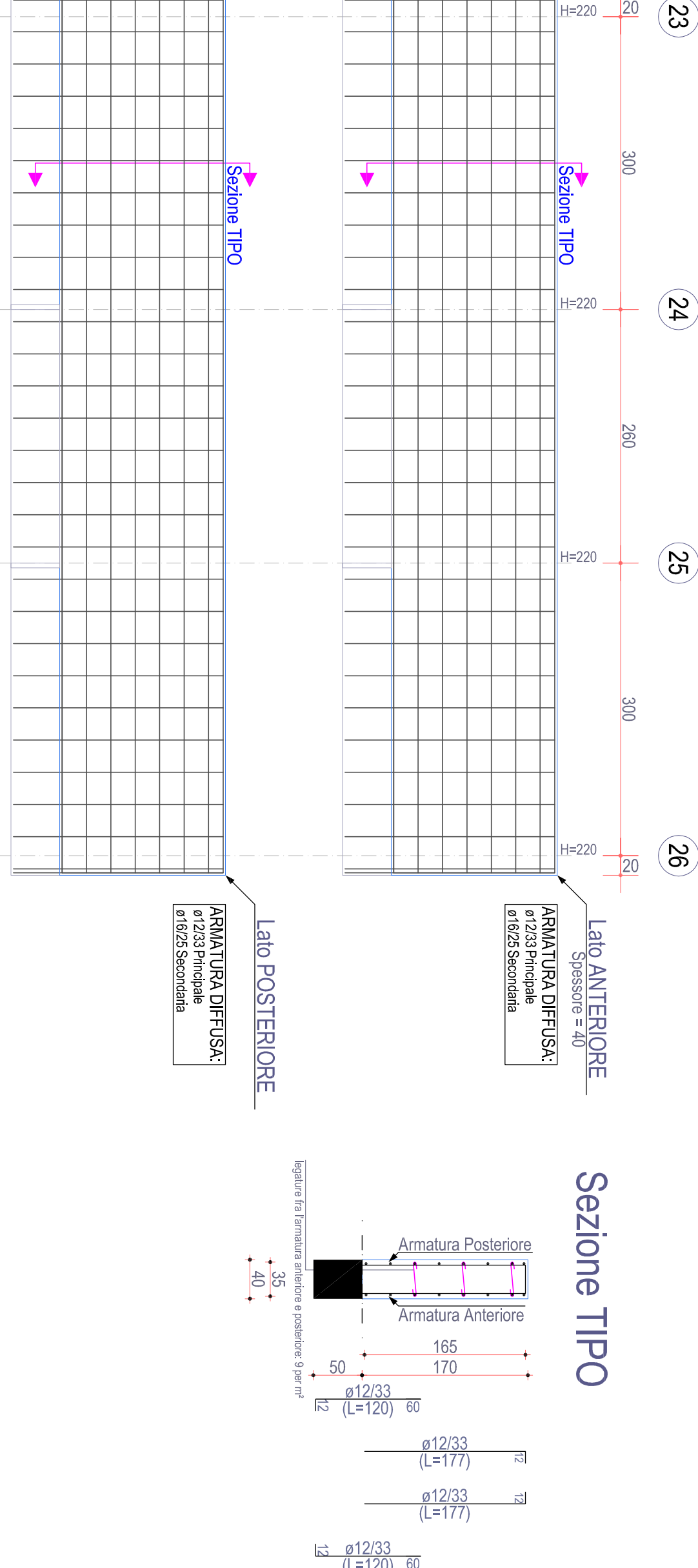
Scala: 1/50

Sezione TIPO



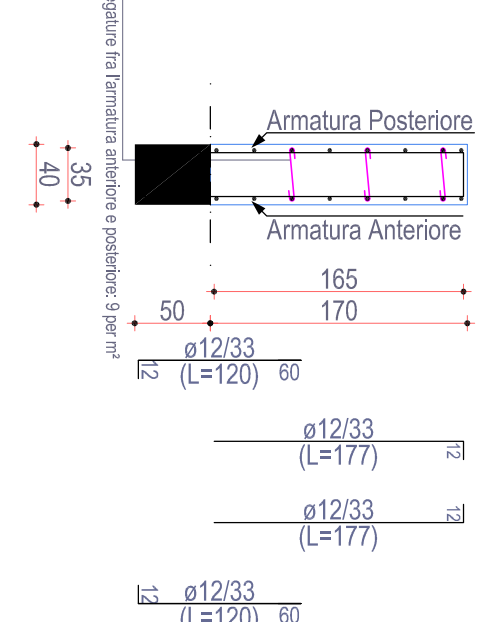
PARETE 23-24-25-26

Piano Nervatura



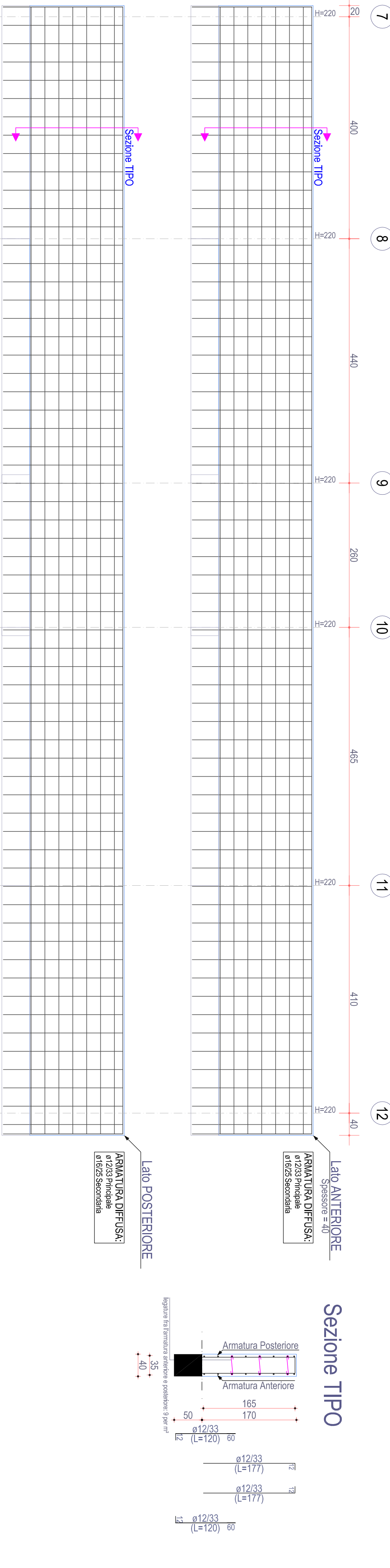
Scala: 1/50

Sezione TIPO



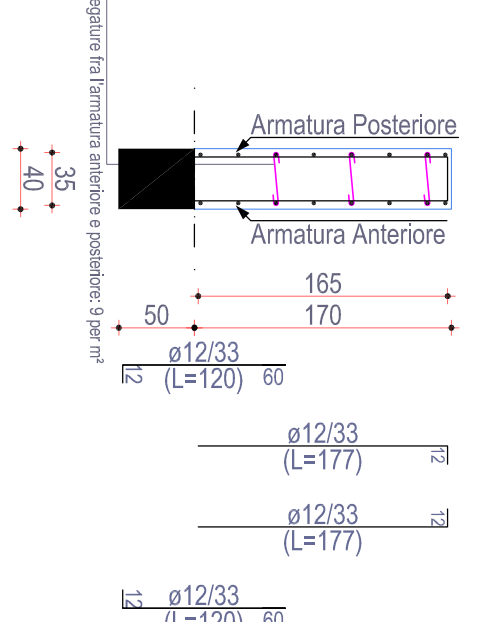
PARETE 7-8-9-10-11-12

Piano Nervatura



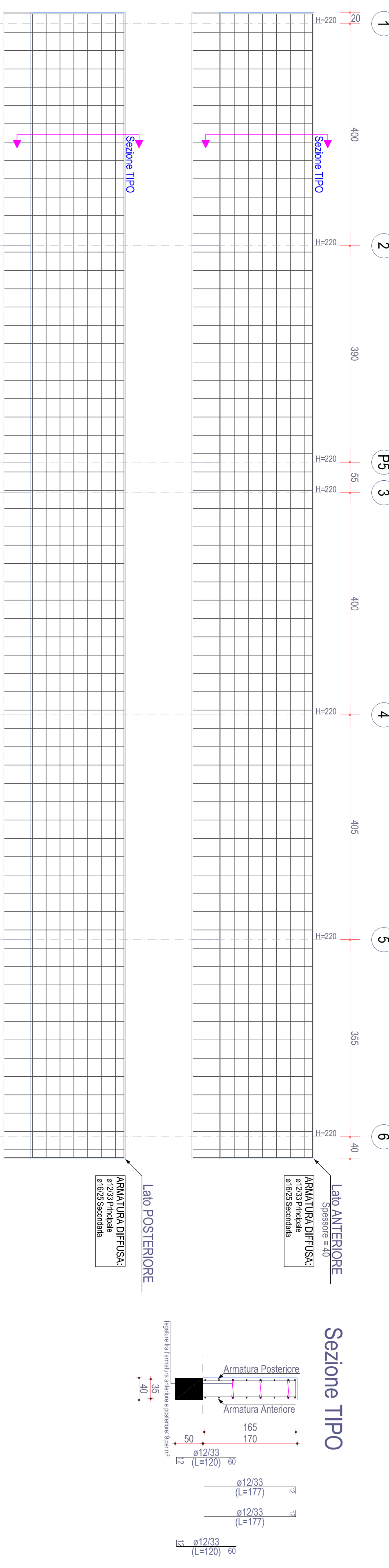
Scala: 1/50

Sezione TIPO



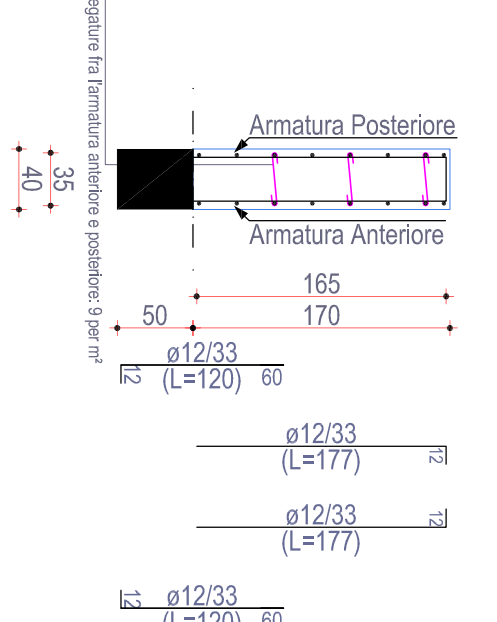
PARETE 1-2-P5-3-4-5-6

Piano Nervatura



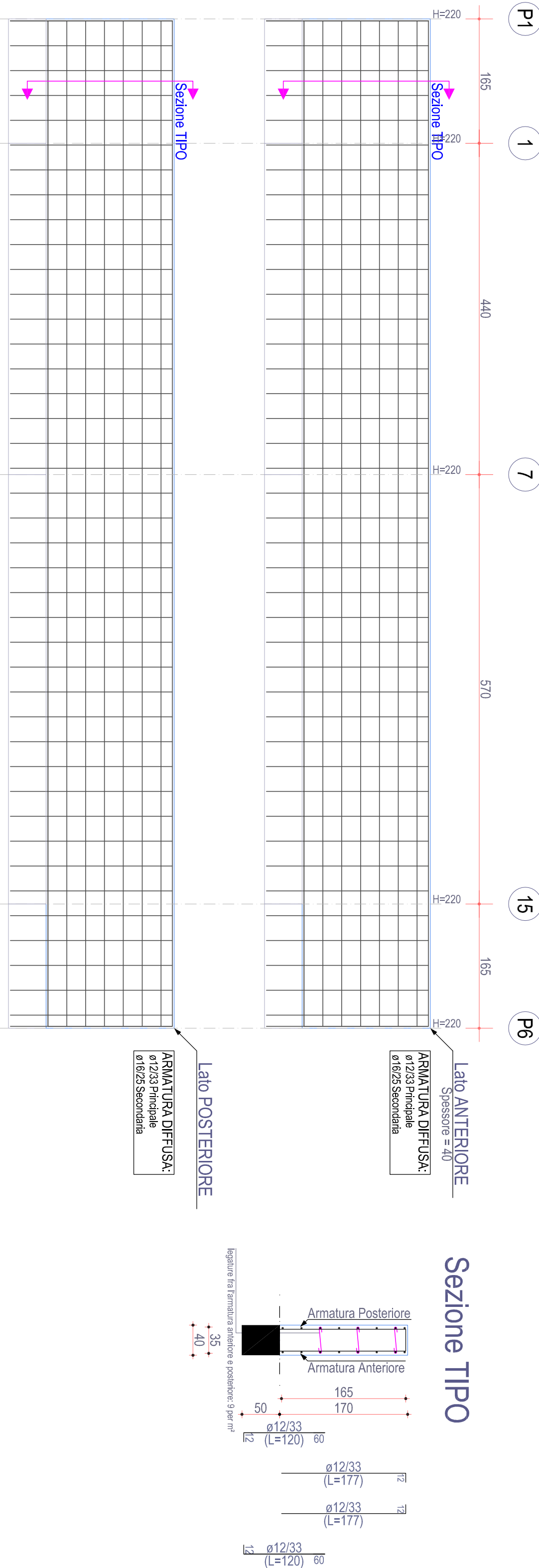
Scala: 1/50

Sezione TIPO



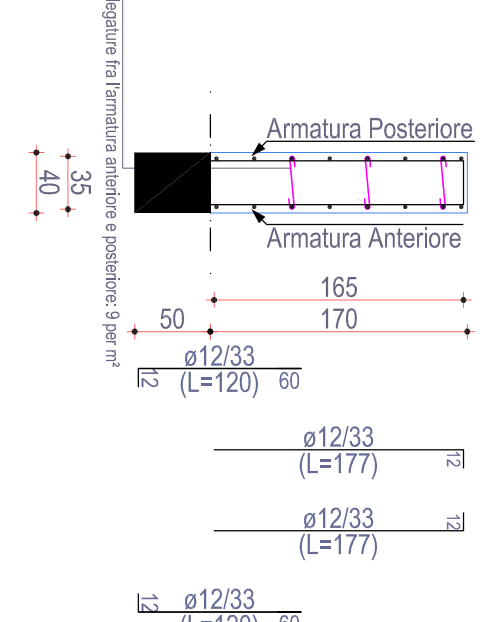
PARETE P1-1-7-15-P6

Piano Nervatura



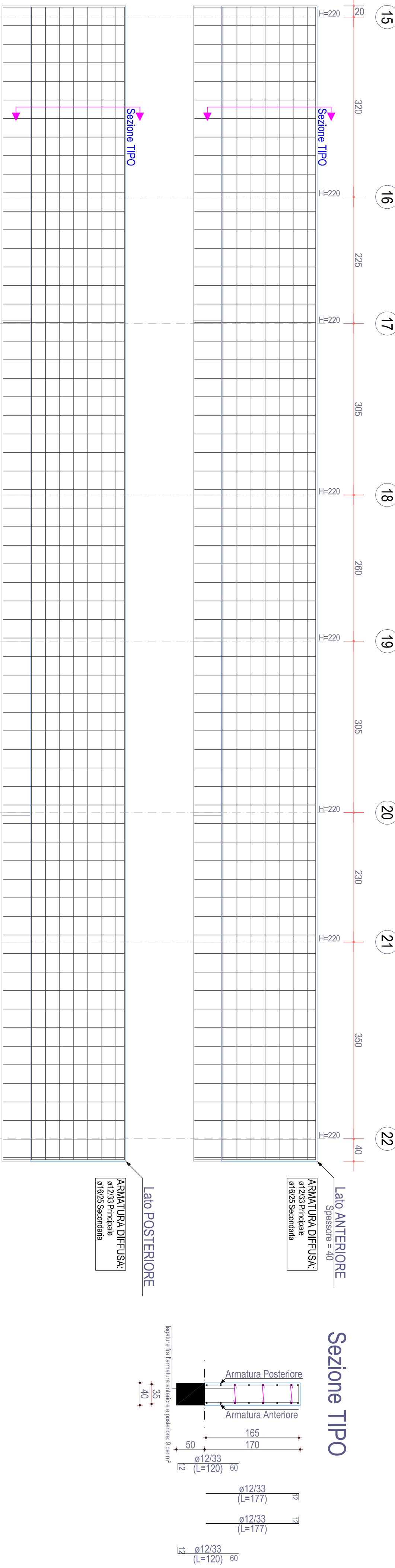
Scala: 1/50

Sezione TIPO



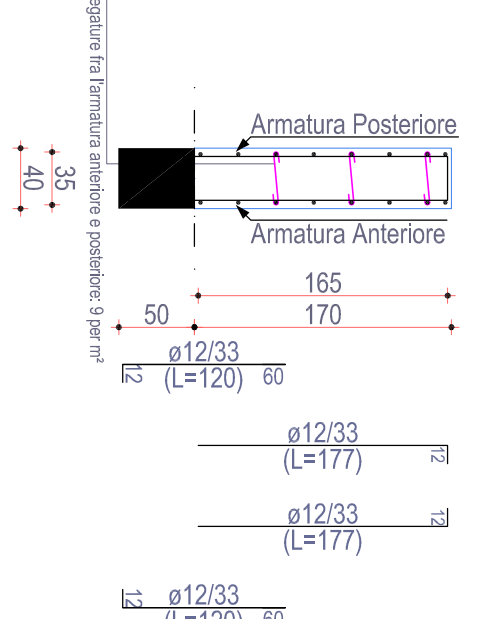
PARETE 15-16-17-18-19-20-21-22

Piano Nervatura



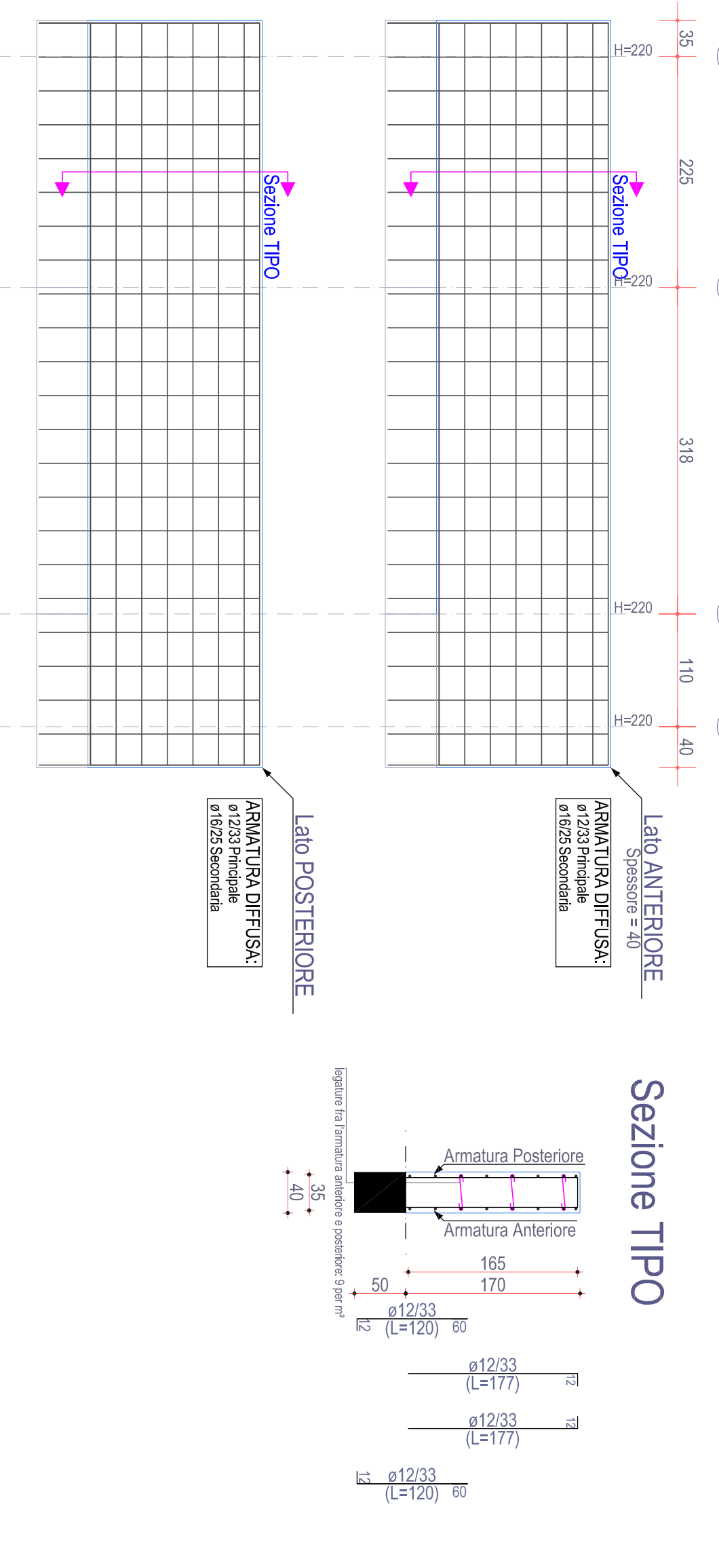
Scala: 1/50

Sezione TIPO



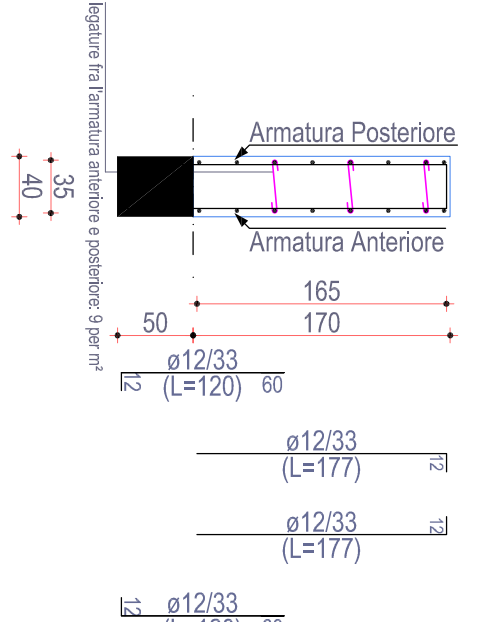
PARETE 9-13-18-24

Piano Nervatura



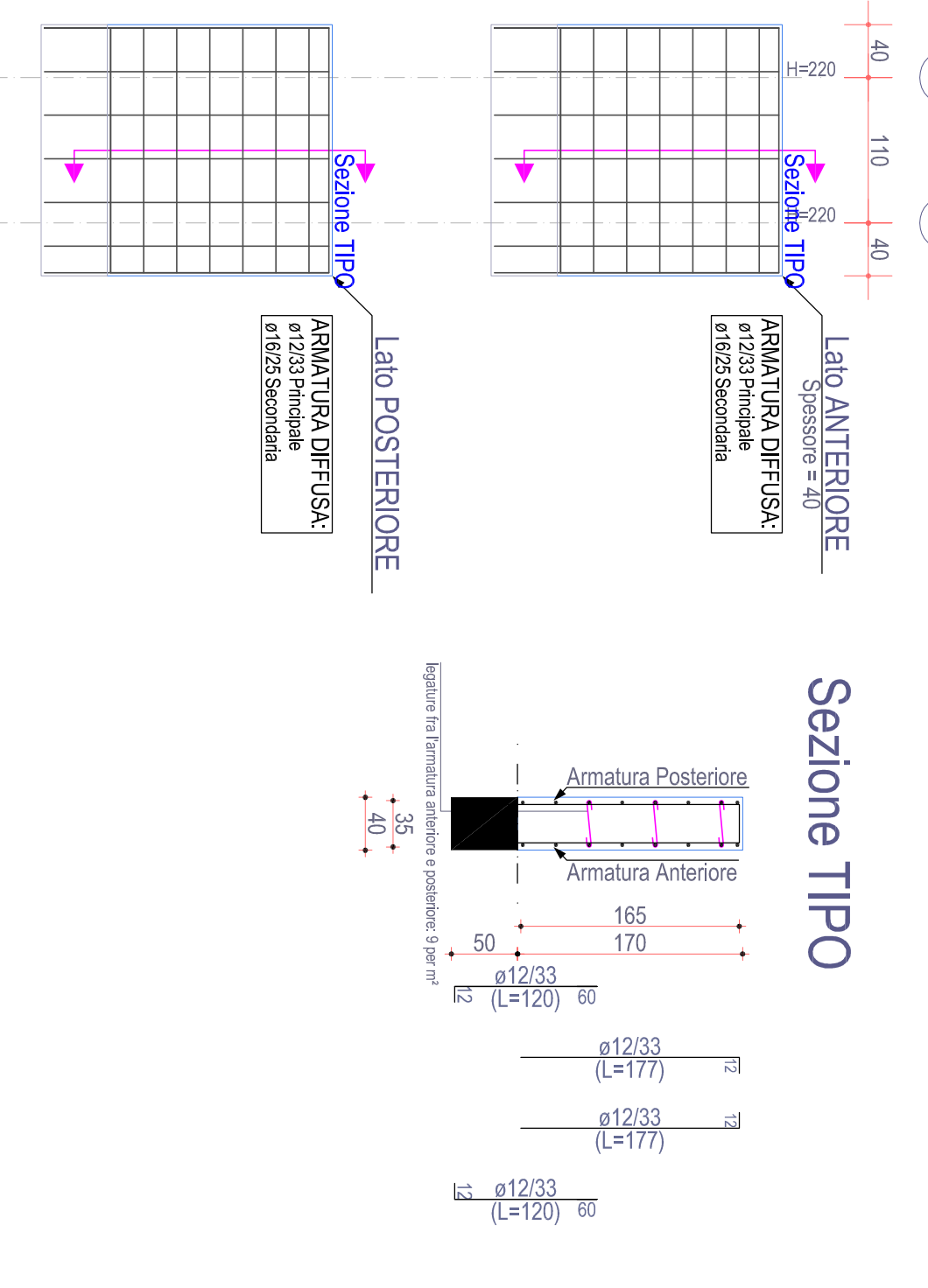
Scala: 1/50

Sezione TIPO



PARETE 17-23

Piano Nervatura



Scala: 1/50

Sezione TIPO

